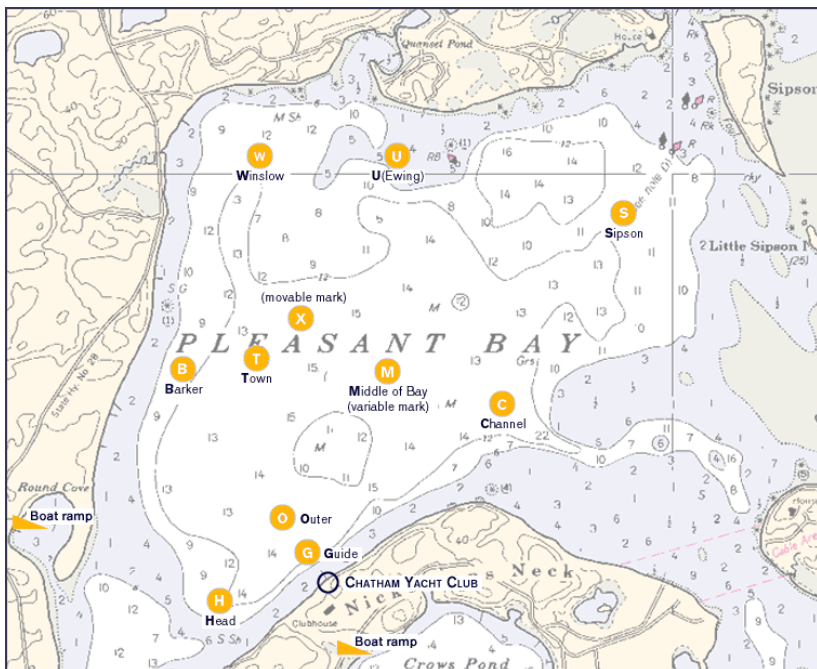




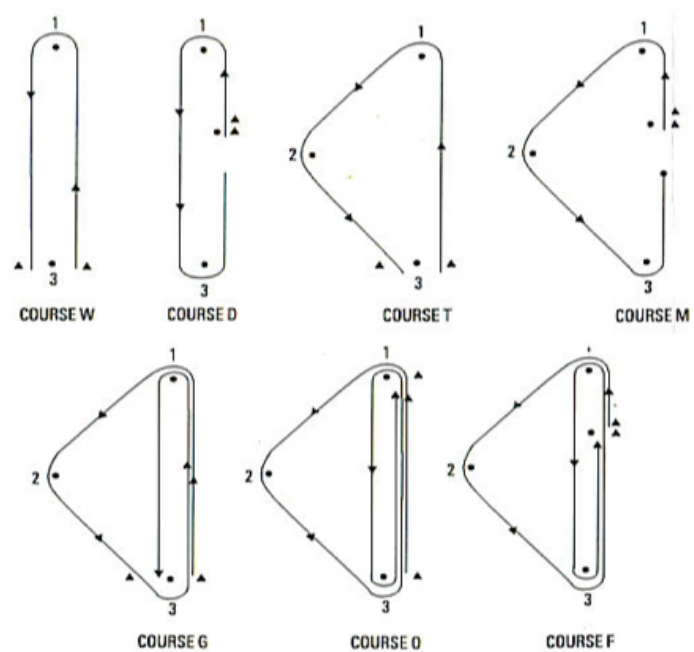
**CHATHAM YACHT CLUB**  
**RACE COURSE SYSTEMS AND RACE SIGNALS**

**FIXED MARK RACE COURSE SYSTEM**



Mark Symbol	Mark Name
B	Barker
C	Channel
G	Guide or "Inner"
H	Head of the Bay
M	Middle of the Bay
O	"Outer"
S	Sipson
T	Town
U	Ewing
W	Winslow

**DROP MARK RACE COURSE SYSTEM**

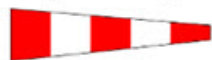


Course Symbol	Course Description
W	Windward, Leeward
D	Windward, Leeward, with start and finish in middle of leg
T	Triangle
M	Triangle with start and finish in middle of leg
G	Gold Cup – Triangle followed by Windward, Leeward
O	Olympic – Triangle followed by Windward, Leeward
F	Modified Olympic – "O" with start and finish in middle of leg

### RACE SIGNALS

The meanings of visual and sound signals are stated below. An arrow pointing up or down (↑↓) means that a visual signal is displayed or removed. A dot (•) means a sound; five short dashes (-----) mean repetitive sounds; a long dash (—) means a long sound. When a visual signal is displayed over a class flag, the signal applies only to that class.

#### Postponement Signals



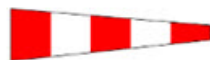
↑••• ↓•

**AP** Races not started are *postponed*. The warning signal will be made 1 minute after removal unless at that time the race is *postponed* again or *abandoned*.



↑•••

**AP over H** Races not started are *postponed*. Further signals ashore.



↑•••

**AP over A** Races not started are *postponed*. No more racing today.



**Pennant 1** ↑••• ↓•



**Pennant 2** ↑••• ↓••



**Pennant 3** ↑••• ↓••



**Pennant 4** ↑••• ↓••



**Pennant 5** ↑••• ↓••



**Pennant 6** ↑••• ↓••

**AP over a numeral pennant 1-6** *Postponement* of 1-6 hours from the scheduled starting time.

#### Abandonment Signals



↑•••• ↓•

**N** All races that have started are *abandoned*. Return to the starting area. The warning signal will be made 1 minute after removal unless at that time the race is *abandoned* again or *postponed*.



↑••••

**N over H** All races are *abandoned*. Further signals ashore.



↑••••

**N over A** All races are *abandoned*. No more racing today.

#### Preparatory Signals



↑• ↓—  
**P** Preparatory signal.



↑• ↓—  
**I** Rule 30.1 is in effect.



↑• ↓—  
**Z** Rule 30.2 is in effect.



↑• ↓—  
**Black flag.** Rule 30.3 is in effect.

#### Recall Signals



↑•  
**X** Individual recall.



↑••• ↓•  
**First Substitute** General recall. The warning signal will be made 1 minute after removal.

#### Shortened Course



↑•••  
**S** The course has been shortened. Rule 32.2 is in effect.

#### Changing the Next Leg



-----  
**C** The position of the next *mark* has been changed:



to starboard;



to port;



to decrease the length of the leg;



to increase the length of the leg.

#### Other Signals



↑•  
**L** Ashore: A notice to competitors has been posted. Afloat: Come within hail or follow this beat.



-----  
**M** The object displaying this signal replaces a missing *mark*.



↑•  
**Y** Wear a personal flotation device.



(no sound)  
**Blue flag or shape.** This race committee boat is in position at the finishing line.